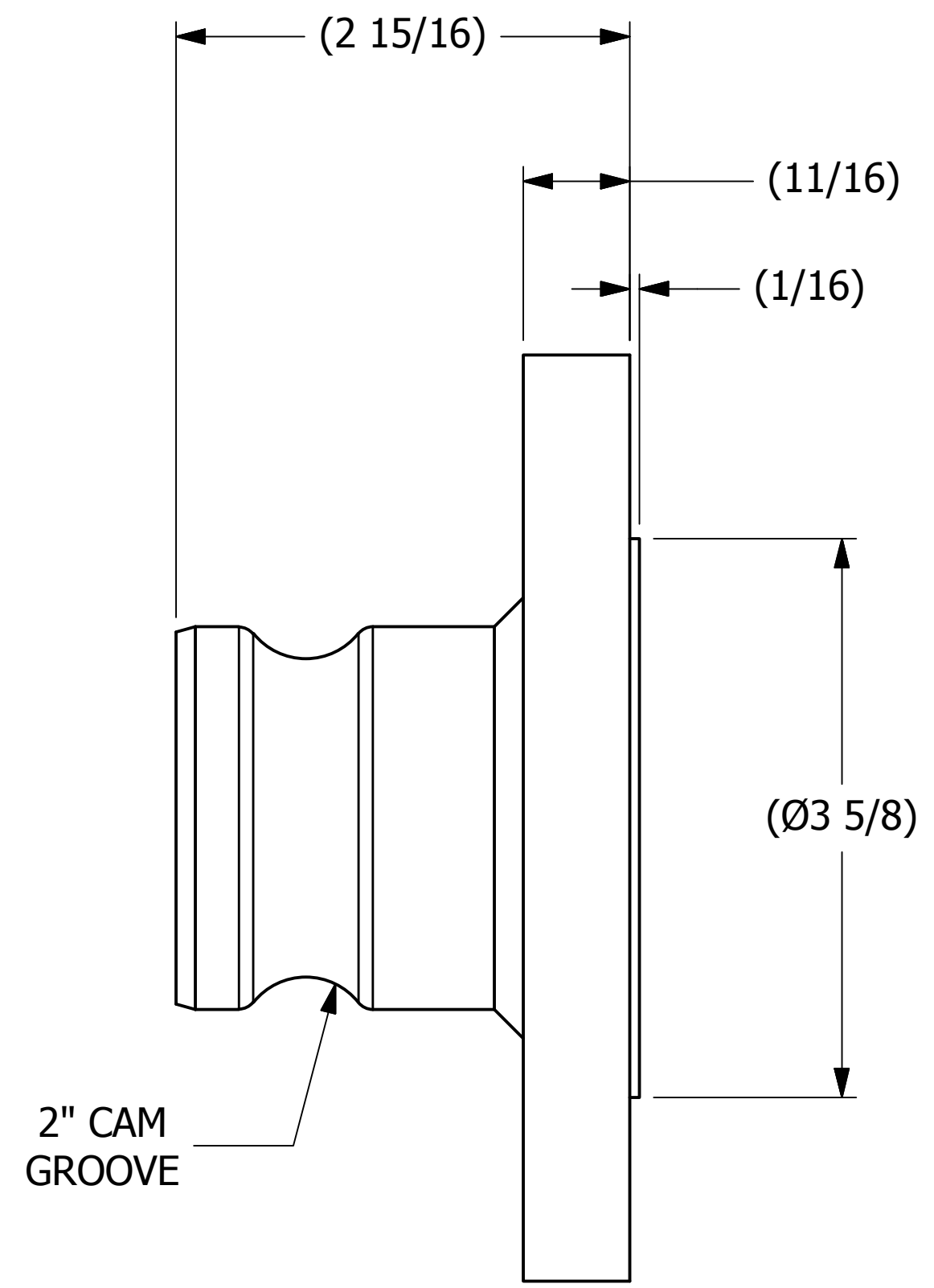
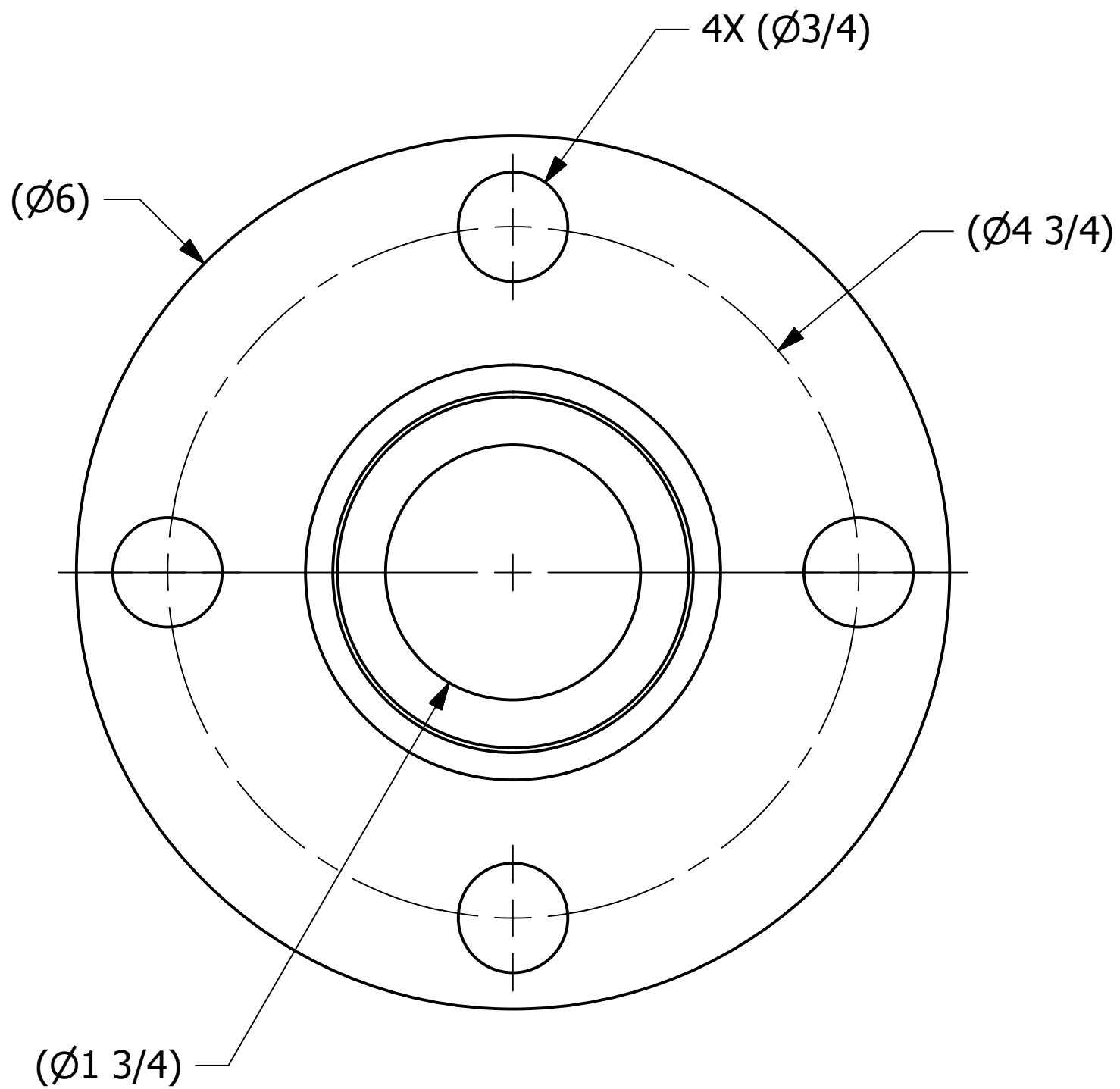


SALES DRAWING SALES DRAWING

SALES DRAWING SALES DRAWING



REV	BY	DATE	DESCRIPTION
B	JG	12-4-18	Q-2.14 WAS QAP5A-1; Q-2.15.7 WAS QAP4C-1; WELD NOTE WAS DSS 12
A	WEB	8-15-17	RELEASED FOR PRODUCTION

<small>UNLESS OTHERWISE SPECIFIED DIMENSIONAL TOLERANCES FRACTIONAL: $\pm 1/16$ X.XX: $\pm .03$ X.XXX: $\pm .015$ ANGLE: $\pm 1^\circ$ DEBURR ALL SHARP EDGES. ALL MACHINED SURFACES TO HAVE A 125 RMS FINISH UNLESS NOTED OTHERWISE.</small>	DRAWN BY:	WEB
	CHECKED BY:	EJF
	PROTOTYPE BY:	WEB
	PROTOTYPE DATE:	2/22/2016
	APPROVED FOR PRODUCTION BY:	EJF
THIRD ANGLE PROJECTION	PRODUCTION DATE:	8/15/2017

SALCO PRODUCTS, INC.		
PART NAME: QUICK CONNECT 2" FLANGED		
MATERIAL: 316 SS		
PROJECT #:	SHEET #:	SCALE:
R150220	1 OF 1	1:1
DRAWING #:	PART #:	
C43295	K20S150F	

THIS PRINT, PROPERTY OF SALCO PRODUCTS INC., CONTAINS PROPRIETARY INFORMATION AND MUST NOT BE COPIED, REPRODUCED, OR USED DETRIMENTALLY TO OUR INTEREST.